

FRM1 RELAY



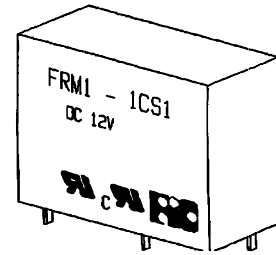
FEATURES

Miniature high power relay with big performance in small package
High contact capacity
Designed for the use of heavy duty
Slim type and low cost
Dust cover or sealed type

 c  Recognized File No.: E141516, TV5



Recognized File No. : R2034463 (For FRM1 with 1 pole only)



SPECIFICATIONS

COIL RATING

| RATED VOLTAGE (V DC) | COIL RESISTANCE Ω +/- 10 % | RATED CURRENT (mA) | MUST OPERATE VOLTAGE | MUST DROPOUT VOLTAGE | MAXIMUM VOLTAGE | POWER CONSUMPTION (W) |
|-------------------------|--------------------------------------|-----------------------|--------------------------------|----------------------|-----------------|---|
| | | | % OF RATED VOLTAGE (At +20 °C) | | | |
| 5 | 47 | 106 | 75 Max. | 10 Min. | 110 Max. | 0.56 Approx. (For 110VDC, 0.75 Approx.) |
| 6 | 68 | 88 | | | | |
| 12 | 275 | 44 | | | | |
| 24 | 1100 | 22 | | | | |
| 48 | 4170 | 11.5 | | | | |
| 60 | 7000 | 8.6 | | | | |
| 110 | 16200 | 7 | | | | |

CHARACTERISTICS

| | |
|---------------------------------|--|
| Contact Arrangement | SPST(1 Form A/1 Form B), SPDT(1 Form C), DPST (2 Form A), DPDT(2 Form C) |
| Contact Material | Silver Alloy |
| Contact Resistance | 50m Ω Max. (Measured at 1A 30VDC) |
| Contact Rating (Resistive Load) | 1 Form C (10A 30VDC/220VAC), TV-5 2 Form C (5A 30VDC/250VAC; Special Type 10A 250VAC /30VDC) |
| Switching Voltage | DC30V/AC 250V Max. |
| Operate Time (Initial) | 15ms Max. |
| Release Time (Initial) | 5ms Max. |
| Insulation Resistance | 1000M Ω Min. (500V DC) |
| Dielectric Strength | 1000V AC(50Hz/min.) Between open contacts 5000V AC(50Hz/min.) Between coil and contact 3000V AC(50Hz/min.) Between contact sets (For 2 Poles) |
| Ambient Temperature | -40°C to +85°C |
| Vibration | 10 - 55Hz 1.5mm Double Amplitdue |
| Humidity | 20 - 85% RH |
| Operation Life | Mechanical : 10 ⁷ Electrical : 10 ⁵ (At rated load) |
| Weight | 18g Approx. |

[Specifications are subject to change without notices.]

FORWARD INDUSTRIAL COMPANY. (O/B COMMERCIAL UNION LTD)

RM. 1405, Wu Sang House, 655 Nathan Road, Mongkok, Kowloon, Hong Kong.

TEL : (852) 27892365 FAX : (852) 27893102 E-MAIL : sales@ficrelay.com.hk

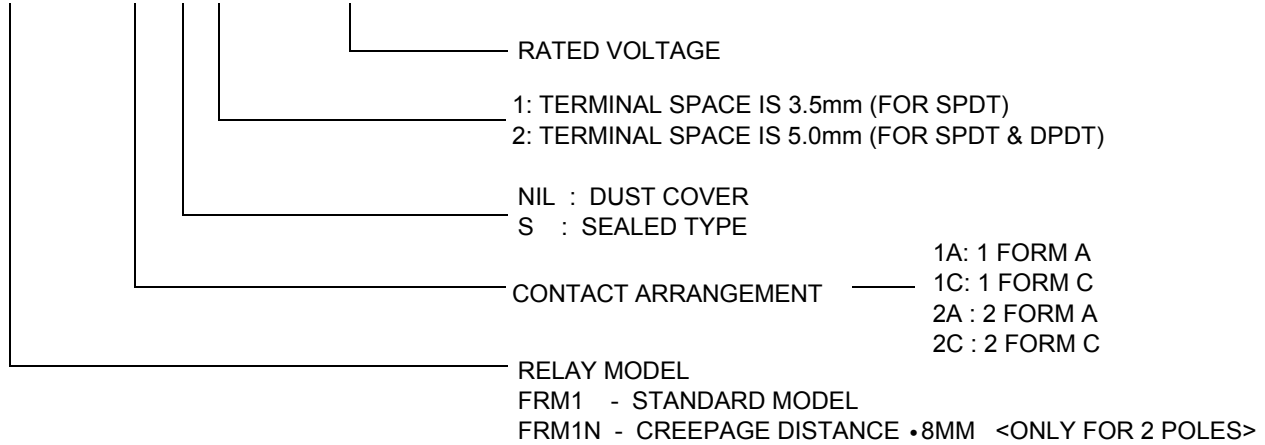
WEBSITE : <http://www.ficrelay.com.hk>

FRM1 RELAY



ORDERING INFORMATION

FRM1 - 2C S 2 - DC12V



Note : Pb-Free and RoHS compliant relays are available.

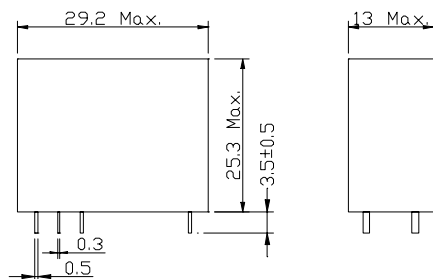
For ordering, please add suffix "Pb-Free" or "RoHS" to standard relay part numbers.

For example : FRM1-2CS2 DC 12V "Pb-Free" for Pb-Free Relay

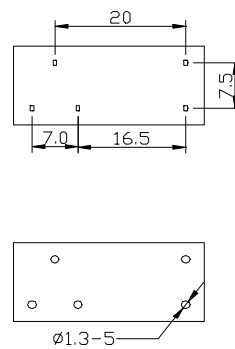
For example : FRM1-2CS2 DC 12V "RoHS" for RoHS Compliant Relay

DIMENSIONS (UNIT:mm)

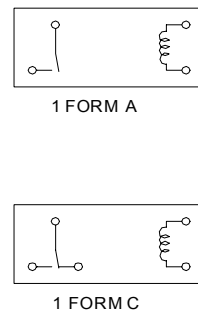
SINGLE POLE



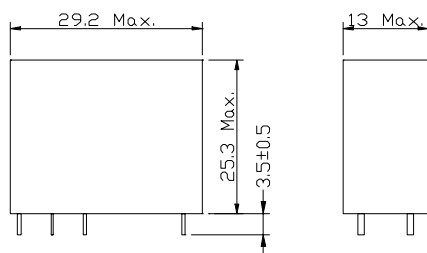
MOUNTING HOLES



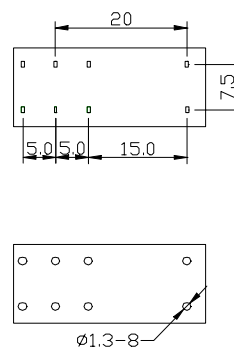
TERMINAL ARRANGEMENT (BOTTOM VIEW)



DOUBLE POLES



MOUNTING HOLES



TERMINAL ARRANGEMENT (BOTTOM VIEW)

