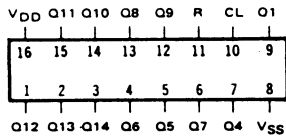
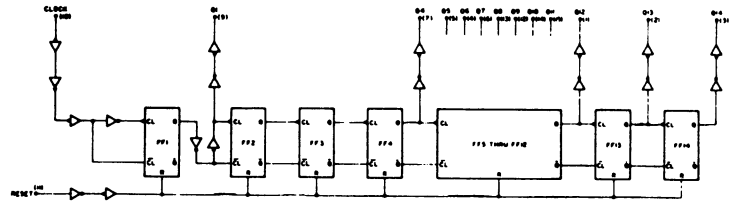


SCL4020B

FOURTEEN STAGE BINARY COUNTER



LOGIC DIAGRAM



STATIC CHARACTERISTICS: (V_{SS} = 0 V)

PARAMETER	CONDITIONS	V _{DD} (Vdc)	T _{LOW} *		+ 25°C			T _{HIGH} **		UNIT
			MIN	MAX	MIN	TYP	MAX	MIN	MAX	
QUIESCENT DEVICE CURRENT I _{DD}	V _{IN} = V _{SS} OR V _{DD}	5		5		0.05	5		150	μA _{dc}
		10		10		0.1	10		300	
		15		20		0.2	20		600	

Note: *T_{LOW} = -55°C for C / H devices, -40°C for E / S devices, **T_{HIGH} = +125°C for C / H devices, +85°C for E / S devices.

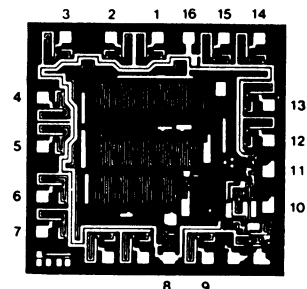
DYNAMIC CHARACTERISTICS: (C_L = 50pF, T_A = 25°C)

PARAMETER	V _{DD} Vdc	MINIMUM	TYPICAL	MAXIMUM	UNIT
PROPAGATION DELAY TIME t _{PLH} , t _{PHL} (CLOCK TO Q1)	5		180	360	ns
	10		80	160	
	15		65	130	
PROPAGATION DELAY TIME t _{PLH} , t _{PHL} (Q _i TO Q _i + 1)	5		100	200	ns
	10		40	80	
	15		30	60	
OUTPUT TRANSITION TIME t _{TLH} , t _{THL}	5		100	200	ns
	10		40	80	
	15		30	60	
CLOCK PULSE WIDTH MINIMUM PW _{CL}	5		70	140	ns
	10		30	60	
	15		20	40	
CLOCK FREQUENCY MAXIMUM f _{CL}	5	3	4.5		MHz
	10	6	9		
	15	7.5	11		
CLOCK RISE & FALL TIME MAXIMUM t _{rCL} , t _{fCL}	5		100	50	μs
	10		100	50	
	15		100	50	

RESET OPERATIONS

PROPAGATION DELAY TIME t _{PHL}	5		200	400	ns
	10		100	200	
	15		75	150	
RESET PULSE WIDTH MINIMUM PW _R	5		100	200	ns
	10		40	80	
	15		30	60	
RESET REMOVAL TIME t _{rem}	5		150	300	ns
	10		65	125	
	15		40	75	

DIE DRAWING
SCL4020B
80 x 78 mils



Note: Refer to "SCL4000B SERIES FAMILY SPECIFICATIONS" for remaining Dynamic & Static Characteristics, and, for recommended and maximum operating conditions.